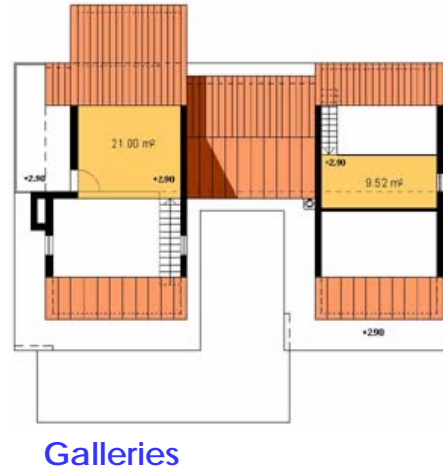
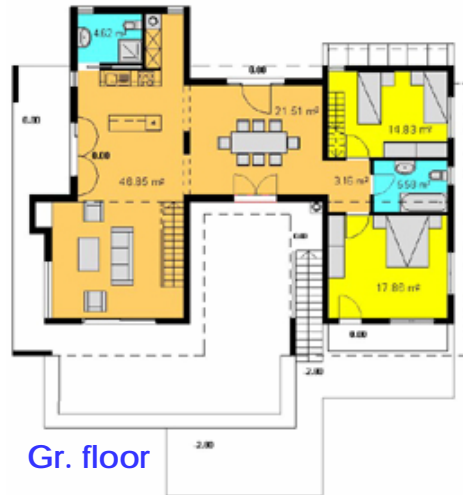


Site plan and floor plans, estate „Xypolito“



Site plan



Each of the 1 & 2 houses has a net living space of 224 m² and 74 m² of garage resp. storage space as well as 2000 m² of land aprox.

Each house unit can be used as a whole or can be separated into two or three smaller units thus enabling individual usage/letting for 3 parties or families.

The individual house is divided into a large living and dining area , one bathroom and a bedroom gallery in the loft. Separated by a large entrance hall a sleeping area follows en suite with two bedrooms one bathroom and a gallery in the loft. The lower gr. floor features an apartment as a guestroom with small kitchen and bathroom and additional garage, heating and storage spaces. Swimmingpool on demand.